

THE COMMUNITY MAGAZINE

# WOLVERTON GREENLEYS



93

AUG / SEP 2015

## EID EXPLAINED

Read more inside...

## IN THE CLUB

What the clubs in Wolverton have been up to.

## YNMK UPDATE

Please see Youth Club update.



Photo: Ben Chinnery

## PAWS FOR THOUGHT DOG SHOW

The Paws for Thought Dog Show took place on the last Sunday in May.



## EXCITING NEWS FROM LANTERN FESTIVAL

The small dedicated Lantern Festival Team has been plotting and planning since January.

# GET SET FOR PLAY

MK Dons SET and MK Play Rangers in Partnership with Wolverton & Greenleys Town Council are holding **FREE** open access Turn Up & Play Sessions at: *Wolverton Victoria Park and Western Road Rec, Greenleys Muga, Hodge Lea Pavillion, & Stacey Bushes Play Builder*

## Activities Include:

**Inflatable rings, breeze block carving, beach party, bath swing and cooking on a fire.** Football, tennis, badminton, cricket, rounders, etc.

All the times are the afternoon slots 14.00 – 16.30

Tues 28th July **Victoria Park**/Hodge Lea

Wed 29th July Western Road Rec

Thursday 30th July **Greenleys**

Tues 4th August **Western Road Rec** / Stacey Bushes

Thursday 6th August **Stacey Bushes** / Victoria Park

Friday 7th August **Hodge Lea**

Tuesday 11th August **Victoria Park** / Hodge Lea

Wednesday 12th August Greenleys

Thursday 13th August **Greenleys**

Friday 14th August **Hodge Lea**

Tuesday 18th August **Western Road Rec**/Western Road Rec,  
BEACH PARTY with MK Dons SET and MK Play Rangers!

Wednesday 19th August Stacey Bushes

Thursday 20th August **Stacey Bushes**

Tuesday 25th August Greenleys

Wednesday 26th August Victoria Park

Sessions in black are delivered by MK Dons SET, sessions in red are delivered by Milton Keynes Council Play Rangers.

For more information please contact Wolverton & Greenleys Town Council on 01908 326800

MK DONS  
LEADER & EDUCATION TRAINER



# INSIDE

- 05 | PAWS FOR THOUGHT  
DOG SHOW
- 09 | ORCHARD COMMUNITY  
NEWS
- 12 | CARETAKING SERVICES  
QUESTIONNAIRE
- 15 | BRITAIN  
IN BLOOM
- 18 | YOUTH NETWORK  
2015 UPDATE
- 25 | RE-ENACTMENT IN  
PLOEGSTEERT
- 35 | WOLVERTON BUSINESS AND  
ENTERPRISE ALLIANCE
- 38 | DIARY DATES  
AUGUST - SEPTEMBER

## Editorial



Welcome to the August edition of Wolverton and Greenleys News. This edition focuses on all the events being held in the community over the coming summer months. Please see our diary page on page 37 for all the family activities over the school summer holidays to keep your children entertained, many of which are funded by the town council.

By the time you read this editorial I will be on my last week of working for the council before embarking on my maternity leave, handing over the Clerking position to Delia Shephard for the next year. Delia is a very experienced Clerk and I'm sure will serve the council and community well. The timing of council employee babies was not well planned, but it gives me great pleasure to announce that our Finance Officer, Dorothy Parker is also expecting her first child in August with her husband Andrew. A new finance officer will be joining the team to manage the council finances over the next year. We also welcome Mandy Shipp to the team, who has taken over the position of Assistant to the Clerk from Sarah Curtis and Alec Brindle as our new Assistant Caretaker.

The council is always looking to improve their services that they provide to the community. In this edition there is a short survey for you to complete on how we could improve our caretaking service. We would be very grateful if you could take the time to complete this survey and return it to us to help ensure that this service is meeting the needs of the community.

I hope you all have a super summer and I look forward to re-joining the parish of Wolverton and Greenleys next September.

**Sally McLellan**  
Town Clerk



## Wolverton Library

### Storytime



For Under 5s

Come along and join us every

**FRIDAY 2.00 – 2.30pm**

for stories, songs and rhymes!

Wolverton Library, Town Hall, Creed Street, MK12 5LY  
Email: [Wolverton.library@milton-keynes.gov.uk](mailto:Wolverton.library@milton-keynes.gov.uk)

[www.milton-keynes.gov.uk/libraries](http://www.milton-keynes.gov.uk/libraries)

Tel: 01908 312812

Milton Keynes Libraries

210514



Morris  
Roofing &  
Leadworks

### Specialists in:

- New roofs/re-roofs
- Lead work
- Roof repairs
- EPDM flat roofing
- Chimney repairs

No job too big or small

Call Lee today on

Mob: 07764 483071

Tel: 01908 412376

Email: [lee@morrisroofs.co.uk](mailto:lee@morrisroofs.co.uk)

Web: [www.morrisroofs.co.uk](http://www.morrisroofs.co.uk)

10 year insurance backed guarantee on all work



## WINDOW CLEANING SERVICE

A PROFESSIONAL AND RELIABLE WINDOW  
CLEANING SERVICE BASED IN MILTON KEYNES

- Traditional Window Cleaning
- Fully Insured
- Regular Monthly Cleans
- One Off Cleans
- Price Range from only **£8** per house

Call Andy on **07594 442 173**

Email: [andy\\_lee1972@hotmail.com](mailto:andy_lee1972@hotmail.com)

## Give Mum a lie in!

10 am – 12 noon, 1<sup>st</sup> Saturday of each month.

Buchfield School, Moon Street,  
Wolverton, MK12 5JG



For dads granddads uncles etc. and their kids

TODDLER AND BABY AREA FOOTBALL

TOYS AND CARS NET AND CRAFT LEGO

Spend time with the kids! Meet other dads!

Only £2 per family\* – price includes **bacon butties!**\*



For any age children. No booking required –  
just turn up! For more info, call Allan 319719

\*veggie option available

# LEARNING FOR LIFE AT GREENLEYS JUNIOR SCHOOL

We have had a very busy year here at Greenleys Junior and when we look back it is amazing to see what has been achieved, how many activities have taken place and the quality of learning that has occurred.

We have, of course, been busy in school following the new National Curriculum in order to ensure that when our pupils move on to their secondary schools they have progressed at a high rate from their different starting points. It is very important that our pupils are ready for the next step on the education ladder. Pupils who took their exams in May 2014 progressed at a rate in the top 20% of schools nationally. We expect to better that this year when the results from the cohort who sat exams in May 2015 are released in a few days.

Our curriculum is both broad and balanced with high expectations in all areas. There have been a number of school trips, including visits to the world famous Harry Potter Studios, Holdenby House for a wartime evacuee adventure, the Living Rain Forest to experience life in the tropics, Bletchley Park to decipher codes and see the Enigma machine and a trip to Milton Keynes Museum to look at



different inventions. Year 6 will be off to Drayton Manor Park in the next few weeks as a reward for their amazing efforts throughout their time here at school.

Many of our pupils have been involved in sports events: badminton, basketball, swimming, athletics and cross country festivals have taken place and the children have been full of enthusiasm and competitiveness at these events. We've even picked up a few medals and trophies along the way.

At Greenleys Junior we ensure that we have equipped our children with the skills and knowledge required to steer them on the right path towards adulthood and beyond and for them to be the best that they can be. When we look back and see what an engaging, diverse and enriching year we have had, we can say we have achieved our goal: that our children are "Learning for Life".



## FANCY JOINING A BRASS BAND?

We're developing Wolverton Town Band and looking for new players of all abilities in all sections

**IT'S FREE - AND IF YOU CAN'T PLAY, WE'LL TEACH YOU**

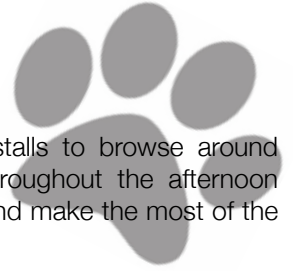
The main band practises on Monday evenings so, if you fancy joining a friendly, local band, please get in touch. Check our website or Facebook page for our future events.



**WOLVERTON  
TOWN BAND**

T: 07847 622462  
E: [info@wolvertontownband.org.uk](mailto:info@wolvertontownband.org.uk)  
T: @WolvertonTBand  
W: [www.wolvertontownband.org.uk](http://www.wolvertontownband.org.uk)  
F: [/groups/wolvertontownband](https://www.facebook.com/groups/wolvertontownband)

# PAWS FOR THOUGHT DOG SHOW



The Paws for Thought Dog Show took place on the last Sunday in May. The weather wasn't playing ball as it was a dull and slightly drizzly day but a bit of drizzle doesn't stop the seasoned dog lovers, and we had over 30 dogs register for the different classes throughout the afternoon.

There was an array of different stalls to browse around and as the weather improved throughout the afternoon more people arrived to take part and make the most of the entertainment.



The afternoon commenced with a brilliant display by Steve Hole's Flyball Team, whose team of dogs entertained everyone with their skills and dexterity over different aspects of the course. This was followed by the first category of 'Best Trick' and then the 'Looks like Owner' category. Music was provided firstly by Mungo Jungo in the 'tea' tent who kindly donated their time to the event. Other classes that took place were Retrieval, Best Puppy, Waggiest Tail and Best Looking Male & Female. There was also an Agility and Scent work course for the dogs to take part in.

Other entertainment during the afternoon was provided by Wolverton Town Band and the Spirit Performing Arts Group while Sophia Gory was extremely busy all afternoon painting the children's faces. There was also a bouncy castle for the children and candy floss to get in a mess with and amazingly delicious home - made cakes and freshly brewed coffee provided by Blue Mountain Yard Café from Wolverton Mill.

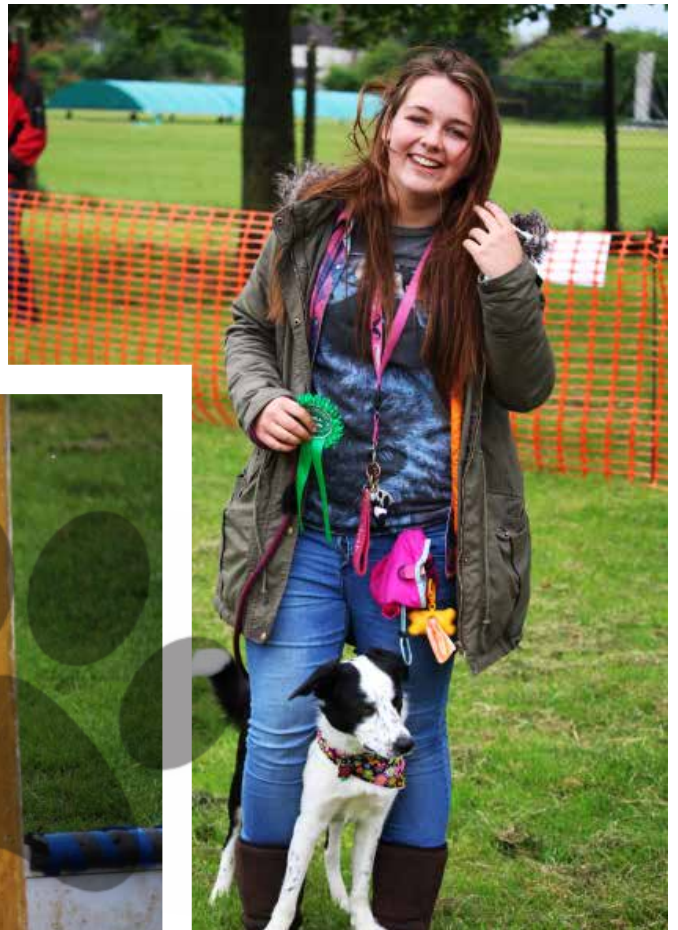


The finale of the day was for Rachel of Rachel's Grooming to judge the very prestigious Dog of the Show Award. The award went to Darwin, a beagle puppy owned by Adam & Kelly Rickard. All of the prizes were kindly donated by Fido & Felix Professional Pet Care and a great time was had by all.

All proceeds were donated to the Dogs for the Disabled charity and over £150.00 was raised for this worthwhile charity.

We would like to thank all the volunteers that gave their time and made great efforts to make the day an amazing success.

All photographs taken by Ben Chinnery (benjchinnery@gmail.com)



# Kickboxing

Wolverton & Newton Longville

Millmead Hall, Haversham Road, Wolverton, MK12 5TN  
Classes Sunday 2.00pm -3.30pm

Longueville Hall, Hammond Park,  
Newton Road, Newton Longville, MK17 0AT  
Classes Monday 6.00pm - 7.00pm & Wednesday 6.00pm - 7.30pm

All classes are suitable for children (5 years and up) and adults.

## First Session FREE

Contact Sarah or Lauren today on  
07910 154 499 or [sarah.ecka@hotmail.co.uk](mailto:sarah.ecka@hotmail.co.uk)

New Start



New You!



facebook



# News from Greenleys First School



*Where Children Come First -*

## School Summer Festival at Greenleys



All the children in school took part in our annual Summer Festival, when we invite parents, carers and siblings to come along and watch the children perform songs and dances which they have been busy practising over the preceding weeks. It was a lively event which was very entertaining, and we were so pleased to see so many families in the audience.

## Arts Competition Winners

The children in Year 2 were asked to create a picture using natural objects and materials in a competition run by the Inner Wheel Club of Wolverton. We were delighted that Grace N and Grace J were "Highly Commended" for their entries, and Kai was the overall winner.

Here is a picture of the winners.



## Sports Day, Wednesday 3<sup>rd</sup> June



We were very lucky to have nice weather for our Sports' Day at the beginning of June. We had a huge audience of families who came to watch the children take part in all the different activities we had arranged for the day. We were joined by Sports Leaders from The Radcliffe School who helped oversee the events, and encourage and support the

children. As you can see in the pictures, there were balancing and relay races, as well as lots of other events. The children did very well and all the parents and carers were proud of them for trying so hard.



## The NED Show Visits Greenleys First School



At the end of June Megan Cabelus from America held an assembly at school all about NED. NED stands for

**N**ever give up \* **E**ncourage others \* **D**o your best

Megan was very inspirational as she told the children about NED who epitomises the core values in life. She told us a story that captivated all the children - about Ned meeting some aliens, and how he learnt to make the correct choices in life. Megan managed to throw a bit of magic into her performance, with lots of thrilling Yo-Yo moves which enthralled the children. The assembly was great fun, and it was lovely to hear the children enjoying it, especially as there was such an important core message.

Our school website address is [www.greenleysfirstschool.org.uk](http://www.greenleysfirstschool.org.uk). Please take a look!

# WOLVERTON COMMUNITY ORCHARD NEWS

Firstly a big thank you to all who attended our Fairies and Wizards Tea Party. A delightful afternoon in the sunshine.



Our Orchard is looking splendid with lots of delicious fruit making its appearance on our trees. Soon you will be able to titillate your tastebuds with delicious homemade fruit pies, tarts, fruit flavoured cakes and jams throughout the year at our Community Orchard Events. We will also be able to provide you with fresh salads to enjoy with your burgers and soup for our winter celebrations.



We have a busy gardening day every Tues from 10.00 to 15.00, weather permitting. Also other days by arrangement. If you would like to join us, do come along. We are a very friendly group of volunteers who love wildlife and nature. We are also very grateful to our visiting conservation volunteers who do some amazing work with us and our town caretakers who give up their precious time to help. We are most grateful. Our veggy plots are looking heathy despite battling against our predators, slugs and snails being the most greedy.

The demonstration plots are looking great and Wyvern School Children, MKC students and Furze Down School students at Winslow have been having a wonderful time learning about the wonders of nature. MKC students have also been involved at the Britain in Bloom polytunnel learning how to sow, prick out and pot seeds as well as working at the orchard. Our children's garden is also taking shape



with an abundance of wildflowers, competition sunflowers, a pond full of wildlife and a flourishing willow feature and wildlife area.



If you would like to become involved in any aspect of the orchard we do have a Wolverton-Community-Orchard facebookpage for you to enjoy or phone Yvonne 01908 320405 or Mandy on 01908 319719 for details.

# THE GROW MAKE & BAKE SHOW

**Saturday 5th September 2015  
at  
Wyvern School, Aylesbury St  
Wolverton**

Doors open 2.30pm      Prize giving 3.00pm



## Free independent information and advice

An Age UK Milton Keynes adviser can help with queries on most aspects of life

- At Wolverton & Greenleys Town Council offices, Wednesdays 10am to 1pm
- At Wolverton Health Centre, Gloucester Road, Thursdays 10am to 1pm
- No appointment necessary



To find out more about how we can help please call 01908 550700

Registered charity 1079773

[www.ageukmiltonkeynes.org.uk](http://www.ageukmiltonkeynes.org.uk)



## Thousands of books at £1 each

Come and visit the largest secondhand bookshop in Milton Keynes

- Children's books from 50p
- Huge selection of DVDs from £1
- Adult fiction 3 for the price of 2
- Every sale supports our services in Milton Keynes

• 202 Stratford Road, Wolverton MK12 5RL  
Open Monday to Saturday 9.30am to 4pm



Donations of books and DVDs always welcome  
t: 01908 319620

Registered charity 1079773

[www.ageukmiltonkeynes.org.uk](http://www.ageukmiltonkeynes.org.uk)



## Need a Plumber or Electrician?

For all your electrical and plumbing needs around the home.

From a leaky tap to a new bathroom or kitchen.

From a new socket to a new light fitting.

No call out charge. No job too small

# 01908 322065

Llewellyn E & P Services

The friendly family business you can rely on

[www.llewellynseervices.co.uk](http://www.llewellynseervices.co.uk)

Email: [info@llewellynseervices.co.uk](mailto:info@llewellynseervices.co.uk)



# AN EXPLANATION OF EID

## *Eid Mubarak*

During the month of Ramadan, Muslims observe a strict fast and participate in pious activities such as charitable giving and peace-making. It is a time of intense spiritual renewal for those who observe it. At the end of Ramadan, Muslims throughout the world observe a joyous three-day celebration called Eid al-Fitr (the Festival of Fast-Breaking).

Eid, is an important religious holiday celebrated by Muslims worldwide. The religious Eid is a single day during which Muslims are not permitted to fast. The holiday celebrates the conclusion of the 29 or 30 days of dawn-to-sunset fasting during the entire month of Ramadan. The day of Eid, therefore, falls on the first day of the month of Shawwal.

The date for the start of any lunar Hijri month varies based on the observation of new moon by local religious authorities, so the exact day of celebration varies by locality. However, in most countries, it is generally celebrated on the same day as Saudi Arabia.

Before the day of Eid, during the last few days of Ramadan, each Muslim family gives a determined amount as a donation to the poor. This donation is of actual food -- rice, barley, dates, rice, etc. -- to ensure that the needy can have a holiday meal and participate in the celebration. This donation is known as sadaqah al-fitr (charity of fast-breaking).

On the day of Eid, Muslims gather early in the morning in outdoor locations or mosques to perform the Eid prayer. This consists of a sermon followed by a short congregational prayer.

After the Eid prayer, Muslims usually scatter to visit various family and friends, give gifts to each other (especially to children) and make phone calls to distant relatives to give well-wishes for the holiday. New clothes are worn and traditional dishes are prepared so these can be enjoyed by friends and family. These activities traditionally continue for three days.

Ansar Hussain, Chairman WGTC

# CARETAKING SERVICES

## QUESTIONNAIRE

The Town Council are currently reviewing the service that our caretakers provide to the community and would appreciate it if you could take the time to complete and return the below questionnaire to: Town Hall, Creed Street, Wolverton, MK12 5LY or email it by office@wolvertonandgreenleystowncouncil.gov.uk by 31<sup>st</sup> August 2015

**Questionnaire**

**A. What are your top three priorities that you would like the council caretaking service to provide?**

- 1.
- 2.
- 3.

**B. Which part of the parish do you live in? (Tick appropriate box)**

- Hodge Lea
- Stacey Bushes
- Wolverton
- Greenleys
- Old Wolverton
- Wolverton Mill
- Stonebridge



## BOOK GROUP IN WOLVERTON

**Would you like to join a small, friendly book group which meets monthly in Wolverton on Thursdays?**

We meet at 10.30 in the town hall on the first Thursday in the month. The library provides books for a pound a month each. We read and discuss in an informal way. To join please speak to one of the librarians, the library phone number is

**01908 312812**

## It's Summer!

### Why not enjoy our churches and their surroundings?



**A new path...** some of you might have noticed the refurbishment project of the path at Holy Trinity Church. With a very steep beginning, it was especially hard for those with mobility difficulties, or people pushing prams or buggies. Over the years it has also narrowed, and the surface had degraded, with many potholes.

But thanks to the support of a grant from WREN (Waste Recycling Environmental Ltd), a match-fund grant from Wolverton & Greenleys Town Council, along with the significant contribution from our own donors, we began the work last year.

After digging up the existing path, we regraded the beginning making it less steep. The retaining boards were replaced, a new tarmac base layer was laid, before top shingle of a colour that compliments the architecture and stone of the building was applied. Finally new lighting means the path is less dark in the evenings.

This was a major project for us, and we hope has made a difference to those using our churchyard for your exercise and leisure. Enjoy our grounds this summer - maybe with your family, for a run, or just to enjoy some of the beauty and stillness of the place.



### Holy Trinity's Tea @ 3!

What would August be without the delicious Tea @ 3 extravaganza at Holy Trinity Church?

- \* Cakes
- \* Raffle
- \* Plant stall
- \* White Elephant
- \* Tombola
- \* Book stall
- \* Craft stall
- \* Games and activities



And... why not take the chance to climb our tower and look over the whole of Wolverton!

Join us on **Saturday August 22<sup>nd</sup> from 3pm – 5pm.**

Why not look at our website for details of our services, events or for information on getting married, celebrating a Christening or finding out more about God and Jesus.  
[www.saint-george.org.uk](http://www.saint-george.org.uk) or [www.holy-trinity.net](http://www.holy-trinity.net) or find us on Facebook!

Contact us: on 01908 222802 (Rev Gill Barrow-Jones) or email [gillbarrow@yahoo.com](mailto:gillbarrow@yahoo.com)

**May you & your family know God's blessing this Summer!**

## A RIVER TRIP "SOMEWHERE IN ENGLAND"

Although it was the hottest day of the year and with some members deciding to stay in the cool of their own homes, the rest of The Wolverton Senior Citizens' Coffee Club had a most enjoyable day cruising on the river at Bedford.

The tour guide told everyone that during the war when The Glenn Miller Orchestra broadcast from The Corn Exchange, the BBC announcer never disclosed the location of the concert, just that it was "from somewhere in England". It was fascinating to view Bedford from the different angle of the river and to learn several facts about the town. Lunch was served on The John Bunyan, a 72ft long boat before members were then taken to Frosts Garden Centre at Willington for more treats in the form of a cream tea. It was a delightful annual outing and grateful thanks are extended to the Wolverton Masonic Lodges for their financial backing.



**Are you a local business?  
Looking for an opportunity to increase  
your audience?**

**Wolverton Tennis Club are inviting local businesses  
the opportunity to donate a prize to their  
Annual Dinner Dance Raffle 2015.**

Each year we run a raffle to raise funds for the maintenance of the club-house tennis facilities, and it tends to be prizes of bottles of wine and tubes of tennis balls. This year we are looking to involve local businesses to Wolverton whereby they would donate a prize to the raffle and we can then promote the business at the same time to local people. Tickets will be on sale in advance of our presentation evening to all club members, juniors and seniors, with a reach of approx 150 individuals.

Interested? Please contact [wolvertontennis@hotmail.com](mailto:wolvertontennis@hotmail.com)



**WOLVERTON  
TENNIS CLUB**

1903

# BRITAIN IN BLOOM



**The Royal Horticultural Society judges came looking around Wolverton & Greenleys on 8th July, but we shall not know the result until September.**



This year we had a good core team of volunteers, conspicuous in our new bright yellow T-shirts printed by Maisie's. Many residents have come forward to help in their own areas, and many more are looking after a small planter on their own doorstep. To keep the flowers blooming right



through until the Autumn please water, deadhead, water, deadhead and water, with an occasional fertiliser feed. Many people have lovely front gardens that passers-by can appreciate.

This year's theme was 'greening the streets' so we focused on keeping everything going from previous years and getting more planters outside houses with no front garden, especially in Church Street. The colour theme was hot pink, white and blue. In Bloom volunteers look after most of the ground level flowers but the town council pays contractors to do the baskets up the lampposts and do the bulk of the watering. We also put new large planters in the entrance to Goddards Croft and on Ardwel Lane and around a couple

of street signs as local residents would like to have one near you and it, particularly weeding and watering and we will talk about it.



Watering is our main problem, even when it rains. The foliage in a small planter acts as an umbrella over the soil! If your soil feels dry when you poke it, please give it some water. It is very hard to dampen the soil again once it has completely dried out, and you can only do it a few drops at a time. Water finds a way through to the bottom to escape rather than spreading sideways into the compost.



Once again, we thank the Masons for re-painting many of the wooden large planters for us. We are grateful that the Area Caretakers help Britain in Bloom volunteers with the heavy work.

**If your house opens direct on to the street where other people have got Britain in Bloom planters and you would like one too, please tell the staff at the town council office on 01908 326800.**



# **Wolverton's 12<sup>th</sup> Annual Scarecrow Festival**

**Sunday 20th September**

**You can make a mini-scarecrow at the  
Farmers Market on Saturday 20<sup>th</sup>**



**Guided walks from The Square  
at 11.30 am and 3.00 pm.**

**Route for 2015 - The Square, Green Lane,  
Moon St, Victoria St, Osborne St, Buckingham St,  
Aylesbury St, Oxford St, Western Rd, Eton  
Crescent, Peel Rd, Windsor St, & Church St.**

**IF you want to make a scarecrow but are not on  
this route, you are welcome to set up your  
scarecrow in the Community Orchard.**

**Refreshments at The Community Orchard  
(behind Western Rd)**



THE PRESSURE IS  
ON TO FIND YOU THE  
RIGHT BUYER AT  
THE BEST PRICE!

\*Terms & conditions apply! If you have instructed another agent on a sole agency and/or sole selling right basis, the terms of these instructions must be considered to avoid a possible liability to pay two commissions.

 **creative**  
residential sales and lettings

Call us now for a free  
no obligation market appraisal  
**01908 373583**  
[creativeestateagents.co.uk](http://creativeestateagents.co.uk)



**SAPWELL'S**

#### SUSPENDED TIMBER FLOOR INSULATION

We specialise in the installation of insulation to the ground floors of houses that have floor boards, including Victorian, Edwardian and homes constructed before the 1970's.

Making your home more comfortable by eliminating draughts, retaining heat and reducing your energy consumption, are all achievable in older homes when the ground floor is insulated.

And now, insulating your floor has just got cheaper as this type of work now falls outside the scope for Building Regulations.

Bookings are now being taken for October & November 2015.

**Contact us to arrange a free survey/quote:**

**Phone: 07732 752334 Email: [info@sapwells.co.uk](mailto:info@sapwells.co.uk)**

**Website: [Sapwells.co.uk](http://Sapwells.co.uk)**



[buywithconfidence.gov.uk](http://buywithconfidence.gov.uk)

## Wolverton Community Farmers Market

*'Fresh - Affordable - Friendly'*  
a Wolverton Local Food Train initiative



1st and 3rd Saturdays  
of every month  
9.00am to 1.00pm  
outside the town hall  
on the corner of  
Creed Street  
and Stratford Road

Enjoy MK's unique  
eco-friendly café  
**The Teapot**  
fairtrade/organic  
teas & coffees, cordials,  
home-made cakes

# YOUTH NETWORK

# YNMK 2015 UPDATE

## CLUB for 13-19's

at the Wolverton Scout Hall, Furze Way, Wolverton MK12 5AQ

**MONDAYS 7-9pm**

Come along to meet us and discuss your project ideas which so far include making a music video, creating animations, recording lyrics and music, improving the garden area for BBQ's and other outdoor events.

An opportunity to take a trip to Belgium in celebration of Wolverton's twinning with Ploegsteert in June 2016 to meet with other young people over there.

During the Summer holidays, find us at events in Victoria Park, Greenleys and Western Road Rec.

## WOLVERTON JUNIOR CLUB for 7-12's

at the Old Bath House, 205 Stratford Road, Wolverton MK12 5RL

**MONDAYS 4.30-6.30pm**

The club breaks for the Summer on 13th July, re-starts on 14th September 2015.

The Club runs every week during term-time. Come and join us in September to develop your arts skills, take part in drama and music, meet new friends and create lanterns for the festival.

## MUSICAL ESTATES for 12-18's

**CREATE A GIG IN 8 WEEKS – FREE WORKSHOPS – ALL ABILITIES WELCOME**

The successful Musical Estates project comes to Wolverton in September 2015!

 [facebook.com/youthnetworkmk](https://www.facebook.com/youthnetworkmk)



**JOIN US:**  [chris.murphy@ynmk.org](mailto:chris.murphy@ynmk.org)



With thanks to all our funders:



**FIND OUT MORE**  
Visit our website [www.ynmk.org](http://www.ynmk.org)

 + 44 (0)1908 377744  
 [debbie.scott@ynmk.org](mailto:debbie.scott@ynmk.org)

YOUTHNETWORK  
**YNMI**  
MILTON KEYNES

## OUR BELGIANS CAME AGAIN!

**This year we welcomed our Belgian friends with their Harmonie Royale Brass Band back to Wolverton.**

They arrived on Saturday 13th June in time for a Bucks Fizz reception at the Masonic Hall provided by the local Masons. We gave them a plowman's lunch followed by chocolate cake, cream and strawberries. They left to play in the afternoon festivities in Mill Field, Stony Stratford as part of Stony Live, along with Wolverton Town Band, and the weather was miserable!



Spirits were high in Mill Mead Hall back in Wolverton in the evening, where both bands played a free concert, followed by a huge raffle and a meal, with a bar.

Sunday morning saw both bands playing at the Milton Keynes Rose in Campbell Park, where there is a pillar dedicated to Albert French. The MK poet laureate, Mark Niels, had written a new poem and the MK Mayor led the wreath laying. Anne Lees-Smith, who is a niece of Albert French, also read a poem.

Next we all gathered around the Wolverton War Memorial at 12.30 where two more wreaths were laid and speeches made, the Belgian band providing the music and playing

both national anthems. Then they marched down to The Queen Vic in Church Street, playing as they went, and delighted everyone with an impromptu concert in the street. We enjoyed an excellent carvery lunch in the upstairs function room and were delighted by the whole place being decorated in the Belgian flag colours. We were all sorry when the Belgians had to get back on their coach for home. Next year we shall visit them in Ploegsteert (or Plugstreet).



Photos: Roy Backhouse

# SUPPORTING LOCAL BUSINESS TO THRIVE

FUTURE WOLVERTON · PART 2  
SHOPS

**Future Wolverton wants to support local business to thrive.**

Talking to local businesses, we have discovered that behind every shop, company and self-employed person there is a story about why they took the plunge and started up their own business!

The **WOLVERTON BUSINESS DIRECTORY** tries to capture these stories, and give a flavour of the diverse and rich mix of businesses in the Town.



Over the **NEXT THREE** issues of the Town Council Newsletter we will be showcasing some of these businesses, as well as creating an online Directory on the Future Wolverton website.

If you wish to feature, have a listing or to advertise in the hard copy of the Directory please get in touch.

To express an interest please e-mail:  
[info@futurewolverton.org](mailto:info@futurewolverton.org) or call:

**01908 321898**

You need to be willing to **accommodate two meetings** to gather information about your business and for photographs to be taken by the deadlines set out below.

- **CRAFTS & BESPOKE PRODUCTS** (ISSUE 94) by 1 September
- **RETAIL SERVICES** (ISSUE 95) by 1 November



**AL'S HOBBIES**

Flying model aeroplanes has always been my hobby since I was a teenager, which is some time back now, and about 36 years ago I started working in the business for companies that we trade with; I ran one of their model shops in Sussex and subsequently opened shops for other companies.

In the late 80's I soon realised I could be doing this myself. I had six shops in the height of my business back in 2010, I now just have the two shops now, one in Essex and one in Wolverton as a lot of my business is on the internet.

Our building in Stratford Road has always been a model shop dating back to 1927 and is the oldest model shop in the UK. It was formerly the 'Lakes Brothers' store selling models and hardware. Even though all my other businesses had a very modern décor we felt we should keep the original character of our store here in Wolverton - it's great to see lots of happy faces reminiscing in the nostalgia...

**MRS B'S**

I'd lived in Wolverton for 12 years and always felt Wolverton needed a nice, pretty shop selling gifts and unusual items. Then one day I was passing this shop which had just become vacant and it was all just perfect timing.

I've been trading for a year now and enjoy being in Church Street. Cards and kids toys are my best sellers; vintage items tend to go very quickly. We have some amazingly talented artists who live in our town and my shop fully supports them by selling their work.

I love finding and making unique things for special people, so if you have an idea for a bespoke present or something you'd like for your home come and have a chat! I'm happy to source any cards or furniture that anyone would be interested in and keen to receive suggestions.

So, please use me! My stock is affordable and proud at what I would pay for something. I want all my customers to feel comfortable to come in and be inquisitive - and bring your children or your dogs! I want Mrs B's Emporium to be a home from home for you to enjoy.

**BAROVIC JEWELLERS**

Barovic Jewellers is family owned and run business that has traded from the same premises since 2007.

We specialise in jewellery repairs and commissions of bespoke pieces of jewellery to your design using our modern workshops and qualified goldsmiths. We have turned our customers' unused pieces that were going to be scrapped into stunning new pieces that are worn with pride. This is the most cost efficient use of old gold and unused jewellery, often with great sentimental value.

We offer a quick turnaround on watch battery and watch strap replacements, most often while you wait. We have recently started taking on watch repairs and refurbishments to all makes of watches at very reasonable prices.

If we don't have what you are looking for we are more than happy to source it for you and will even to let you pay it off at your own pace to accommodate your budget.

**PRIME PETS**

I decided to set up this business after years of working in an office job that I hated, I've always loved animals, had them as pets, so I've gained a lot of knowledge over the years.

The actual pet store was opened 26 years ago when my son-in-law started the business from scratch. If I hadn't taken the business when he decided to set up, I'd have felt that Wolverton would have had no other means to get good quality pet supplies.

We carry an extensive range of stock including a full range of food for cats and dogs but also for wild birds, badgers, swans, ducks and chickens. We stock live and frozen food for reptiles and dogs - we can also supply you with all types and sizes of cages, leads, winter clothing - even life jackets for taking your pet on a canal boat trip! Delivery can be arranged if you are unable to get to the store. So come, have a browse and a chat - your pets will get a treat too!

**CP LOCKS**

You'll find the owner Karen, Wolverton's modern day 'Albert Ariswright' of 'Open All Hours' always chatty, friendly, knowledgeable and willing to help.

We started off our family ironmongery business 25 years ago on a passing table in the market outside the Agora, then grew into selling locks and cutting keys. The natural progression was to move into a unit in the Agora which was great as we could easily display what we stocked - they were very successful days. However, due to changing times and uncertainty at the Agora, we moved to our new unit at Church Street in 2011 and stock everything you could ever need from any hardware store.

We offer a personal service, always doing our utmost to answer any questions. If we don't stock it, we will locate it and get it in for you.

**MK FURNITURE**

Our family came from Pakistan 50 years ago, and 20 years ago our Elders set up the family business.

Our shop is in the front of the old 'Empire Cinema'. We have some lovely photographs up inside the store of how the cinema once looked. Our building and the old 'Post Office sorting office' next door is owned by 'Central Jamia Mosque'. They renovated the space into retail outlets at the front and a mosque at the rear and upstairs.

We supply beds and bedroom furniture, lounge furniture, sofas, tables and chairs. We stock all types of your flooring needs from carpets, wood, laminate and vinyl, we even stock artificial grass!

We really can accommodate all your home requirements. This is why so many people come to us on recommendation.



**ESSAM'S SHOES**

My paternal Grandfather, who came from Ketting in an area dominated by the Shoe Industry, moved to New Bradwell and set up a shoe repair business in the 1880's. Sometime before the First World War he moved up to Wolverton where I am now, but the shop was very much smaller back then. My grandparents had the one property and converted their front room into a shop front.

After my grandfather died my father took over the business. I initially worked at the local printers McCorquodales then I took over the business in 1973 from my father as it was so busy. This is before the days of the City Centre, and on one day alone we could be ordering three times a day from just one of our suppliers. We had so much stock, the cellar, attic, even the rafters of the attic and under my bed at home were used for storage. My specialist shoe fitting training was in part by Jimmy James who fitted the Royal Children at Buckingham Palace for shoes.

I offer classic styles that do not date so quickly, including adult and children's shoes, Dr Martens, wellington boots and indoor and outdoor bowling shoes. I specialise in stocking an extensive range of shoe sizes and widths and many people come to me because they cannot get them from the big chains in the City Centre.

I give my customers a warm welcome, the knowledge and assurance of my experience and an unrushed service.

To find out more about the businesses and see more photos visit [www.futurewolverton.org/business-directory](http://www.futurewolverton.org/business-directory)

**MAISIES**

My Mother started off with one market stall in Old Wolverton Market, located in the current day Town Council building. She sold all manner of discount items, such as food, toys, shoes and clothing. She then progressed to several stalls and soon had her own smallholding and opened a village shop where she lived in Long Street, Hanslope.

Then, in 1963, she opened her first discount shop in Wolverton called 'Matale Somerset' at rented premises in 78 Church Street. Later she expanded by opening additional stores.

The current building we trade from today was purpose built in the 1930's for the Co-op. When they left the town around 1984, my mother at 80 years old, purchased the building. All the stock from her other stores were transferred into it, apart from fresh groceries. On the first floor we stocked household goods, hardware, curtains, flooring and menswear. Downstairs was full of childrens and ladies clothing.

Today we focus on three business areas, ladies menswear, footwear and school wear. We have the technology on site to print and embroider clothing with any type of wording or logo for clubs, and workwear. We supply about 40 different schools across the whole of Milton Keynes and have two websites which focus on our school wear and menswear.



We came to the UK from Zimbabwe in 2002 so that our children could have a better education; I am proud to say that they have done very well and are now studying at University.

The newsagent was up for sale, so we came to have a look and really liked the area of Wolverton, compared to other towns we had visited, it was very warm and friendly. So in July 2002, we took over from the newsagents at the time called Square Newsagents, choosing to keep the name, although a lot of people still refer to us as Davies as it was once known for many years.

Our style is that of a very traditional newsagent. We stock haberdashery, traditional bottled sweets which are weighed out on vintage scales, children's sweets and pocket money toys, a good range of grown up chocolate too, all types of greeting cards, newspapers and a big variety of magazines. We have added some modern extras in convenience items such as tea bags, sugar and lottery tickets.

**GONE FISHIN!**

We both enjoy fishing and had always dreamed of buying a lake to offer people the opportunity to go and fish. From buying bait one day from the old tackle shop trading here, we were advised that they were selling up, so in 2006 we purchased the business. It has grown tremendously since then with the help of a great team of staff. We have accounts with all the major businesses in the fishing tackle industry.

Gone Fishin sponsors teaching training days, offering subsidised courses to teach you the basics of all you need to know about fishing. We sell starter packs with all the equipment required to go fishing from as little as £20 right up to the requirements of a professional angler. Fishing is a great physical and mental sport; it's relaxing too, something the whole family can enjoy together.

There are two floors of fishing equipment; ranging from over a 1000 different types of hooks, to poles costing up to £4000. Our varied stock caters for all anglers and abilities. We are here to give you the right advice so you get the right equipment, with continued after sales support. We stock everything from live bait right through to larger items such as rods, reels, seat boxes, poles, clothing, luggage, chairs, bed chairs, knives and shelters.

So for the knowledge, product and price, come and see us at Gone Fishin!



Naseem Fabrics is a family business; we opened our first textile shop in Luton 20 years ago. I have spent my life working in the textile trade and know how to source good quality materials.

The shop is very well established with customers travelling to it from Milton Keynes and other areas of the country. I live in Milton Keynes and my customers urged me to open a shop here in Wolverton. I have been trading for nearly a year now and welcome the whole community to see what we sell.

My stock is imported from all over the world with new lines introduced daily. I stock everything in textiles - not just for the Asian community but for the English and wider community too. I stock furnishing and upholstery fabric, ready-made curtains and traditional net curtains in all sizes, bedding sets and table covers in elegant lace to colourful waterproof covers for young families. You will find we are very competitively priced, compared to large well known chain stores and we welcome and cater for all the community.

**MICROTEC**

I went to Hertfordshire University as I've always enjoyed the hardware side of computing and have a BSc in computer science and a Microsoft MCSE. I eventually got fed up working for other people, so 12 years ago my brother Tariq and I decided to set up our own business in Church Street.

We've always lived in Wolverton and my parents are still in our family home in Stratford Road and we attended local schools, so we are really keen to see the regeneration of businesses in Wolverton as it is a nice small community.

We offer a friendly one-to-one service, for retail and business customer. If you have any problems you know you will get personal attention. We stock the majority of components to undertake any repair the same day from repairing laptops/desktops to recovering data. We support local business with all their hardware issues, including setting up their machines and networks. Lots of smaller businesses find an on-going IT maintenance contract can be costly particularly when they often only require assistance for an hour or two, so using us is so much cheaper.

**RUTH'S FLORIST**

Ruth was trained in floristry at Tottenham College and has been passionate about flowers since she was 16. We set up our business as a partnership in 2004. Ruth manages our 'Design Studio' on Stratford Road whilst Gary is involved behind the scenes securing contracts.

We provide flowers, including 'talking flowers' (with a message written on the petals) for all occasions such as birthdays, anniversaries, religious festivals, Valentine's Day to funeral wreaths. We have pot plants, artificial flowers, balloons, chocolate explosions, and fruit baskets. We offer a separate wrapping service which is very popular with the local community and companies alike. We also like to support our local events.

Not only do we provide flowers to local restaurants, hotels and companies but also have prestigious accounts with the Chelsea Flower Show, Hampton Court, the Grand Prix and Wimbledon.

Our 'can do' attitude can cater for any occasion, so if you are looking for something special then please contact us first.

**SHIRLEY'S TRIFT SHOP**

I grew up around Wolverton, going to the local schools and I very much like the history of the town. Since having this shop I have enjoyed being in Wolverton so much that I have moved my family back here.

One day my partner bought me a really nice chair. Having studied art, design and crafts at college, I really enjoyed stripping it back and restoring it. I began to regularly attend vintage fairs and markets buying, restoring and selling furniture. When I had my children, space and time was getting very limited, so we were very excited when this store became available. Our family business is named after my Nan Shirley, who ran a second hand store herself in Old Stratford so I think it's in the blood.

We have been trading for over a year now, sourcing our stock from house clearances and auctions. We are pleased to sell, so it's always advisable to buy what you like when you see it before it's gone as most items are one offs. Our stock is old, quirky and unusual. Subcases and trunks are very popular.

**FACTOTUM**

VIDEO  
PRODUCTION &  
PHOTOGRAPHY

[www.factotumfilm.tv](http://www.factotumfilm.tv)  
contact - factotumfilm@me.com

**FUTURE WOLVERTON** would like to hear from any businesses who would like to be featured in the next issue of the Town Council Newsletter, and online on the Future Wolverton website.

**At the beginning of 2016** we hope to secure enough advertising revenue to publish a paper version of the Business Directory. Copies will then be available at all Town Centre businesses, the Town Hall, Foundation House and the Old Bath House and Community Centre.



# WESLEY'S CHURCH EXTERNAL WORKS START IN JULY 2015 (6 WEEKS)



**In 2012 Kings Church purchased Wesley's after 30 years of dereliction and began a large restoration programme which has so far cost £85,000**



Wesley's, Old Methodist Church, 4 Church Street, Wolverton, MK12 5JN

**Stage 1: Survey's & Purchase** – Completed March 2012.

**Stage 2: Section 9 Emergency Works** to save Wesley's from further damage, floor removal, roof repairs, exploratory excavations, Planning Application working with listed buildings, architects, structural engineers, surveys & reports of all kinds – Completed 2013.

**Stage 3: Underground Works** new 133ft surface water drain, pea shingle drain to take water from foundations, new sewers & new water main - Completed March & June 2014.

In August 2014 - Kings Church also purchased Kings Church Hall & Community Centre next door on which £50,000 has been spent. This has taken a lot of time and effort, but has allowed Wesley's the much needed time in which to dry out.

**Stage 4: External Works** - having now satisfied 3 of 16 listed building requirements, awarded grant monies from Bucks Historic Churches Trust (BHCT) along with other generous donations, we are now able to start stage 4 works.

These start in the first week of July 2015 and run for 6 weeks on the Hovis Alleyway side of the property in the following areas:

- Roof repair
- Tower repair
- Ventilation tower repair
- Lightening Conductor repair
- Victorian style rain water goods
- Repair to stain glass windows
- Other relevant works
- Scaffolding in place through out

The Hovis Alleyway will be closed to all vehicles along the length of Wesley's for 6 weeks but pedestrian access is maintained. The parking bays at the front of Wesley's will also be suspended for construction equipment and lorries, as per the highways closure order.



## Stage 5: Internal Works

If you would like to make a donation to the restoration works or have other enquiries please contact Andy or Shaaron Forbes by phone 01908 411300 or email below.

Kings Church Hall & Community Centre, Creed Street, Wolverton, MK12 5LY

Email: [shaaron@kccmk.co.uk](mailto:shaaron@kccmk.co.uk)

Email: [andyforbes@kingschurchmk.org.uk](mailto:andyforbes@kingschurchmk.org.uk)

Charity Registration No: 1102341

Company Registration No: 5014713

# EXCITING NEWS FROM THE WOLVERTON LANTERN FESTIVAL COMMITTEE...

**It may seem like a long way off but the small dedicated Lantern Festival Team has been plotting and planning since January to ensure that this year's event on Saturday 5 December is one to remember.**

The fabulous news is that funding has already been secured enabling Greenleys First, Greenleys Junior, Wyvern Infant and Bushfield Middle schools to be involved making giant lanterns for the procession and lantern flats to transform the war memorial into a beautifully lit centrepiece for The Square. This work has been supported by funding from MK Community Foundation and Wolverton and Greenleys Town Council. The cogs are still whirring to secure funding for another exciting project with local young people. If there is anyone out there that is keen to help make this happen, please get in touch.



As it's the 50th anniversary of Alice in Wonderland, the theme for this year is 'Children's Literature'. Whether you're a fan of Harry Potter, fancy yourself as an Umpah Lumpah, or love the Mr Men, at this year's procession let your imagination go wild with your lantern creations and fancy dress outfits, inspired by the magic of childhood stories...

This year's parade promises to be louder and more colourful than ever before. Wolverton's very own Lobo Tren supported by Sambassadors of Groove, Samba Bandits and led by The Bushfield Samba Band, are guaranteed to raise the roof and get everyone dancing. Concrete Circus, Festive Road

and The Black Sheep Collective are promising unicyclists, stilt walkers and some unique surprises, not to be missed.

If you are a local maker, writer or vintage market trader and are interested in being part of the street market trading between 2-6pm, please get in touch with Hel Innes [hel\\_innes@hotmail.com](mailto:hel_innes@hotmail.com). Pitches are £15 (£10 for community groups) and arrangements can be made for group public liability insurance if required. Saf's Kitchen, Janet's Wood Fired Pizza, Blue Mountain Cafe and Virtual Orchard have already confirmed to provide delicious ethical, local food to



fuel our winter evening, and the café will be open for hot drinks and sweet treats throughout the afternoon.

The Lantern Festival Team is keen to welcome new faces to help with the preparation of the festival. If you have an hour or two a week over the next few months, or are available to help with the event, there are many ways to get involved. From making lantern kits to sell in local outlets, helping at lantern workshops, distributing posters, social media, decorating the Square, stewarding, looking after artists on the day and lots more...

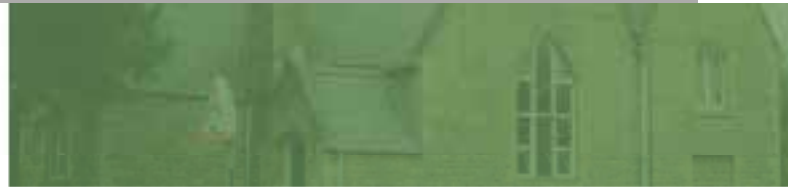
If you're interested in helping, please get in touch with Hannah: [hannahkitchen@homecall.co.uk](mailto:hannahkitchen@homecall.co.uk) and come along to one of our meetings to meet the friendly team.

**Sunday 4 October 10-4pm** – Volunteers needed for lantern kit making session – Main Hall, Old Bathhouse, Wolverton.

**Sunday 8, 15, 22, 29 November** – FREE Lantern Workshops – Main Hall, Old Bathhouse, Wolverton.

**Saturday 5 December** – Wolverton Lantern Festival - Entertainment from 3pm. Parade departs at 4.30pm.





Future Wolverton is a community led organisation which seeks to achieve the sustainable, creative improvement of Wolverton over the next 5 years. We aim to be self-sufficient and financially independent, and to work with partners who share our ambition.

Ran by a Board of Directors, which includes representatives from the Town Council, Wolverton Society and The Radcliffe Community of Schools, Future Wolverton is a membership organisation.

To become a member, visit the Future Wolverton website and complete an application form. We will then arrange to collect your £1 membership fee.

Below is an update on a number of our current projects. Please get in touch if you'd like to find out more:

**01908 321898**

[info@futurewolverton.org](mailto:info@futurewolverton.org)

<http://futurewolverton.org>

<https://www.facebook.com/futurewolverton>

**FUTURE WOLVERTON**  
realising our community's vision

## THE OLD SCHOOL, OLD WOLVERTON

Work continues to rescue the Old School building in Old Wolverton from further decline, and create a community hub for the West End of Wolverton.

The grant from The Architectural Heritage Fund is enabling urgent repair work required to the building to be costed, as well as the identification of sources of funding to help buy and refurbish the building.

Plans to hold a summer garden party in a newly refurbished garden have been slightly delayed, but thanks to offers of help from a number of local companies and Amey Cespa, we hope to be in a position of having an early September event instead!

If you work for an organisation or have contacts with any landscaping companies that could help with the mammoth task of improving the garden please get in touch.

## AGORA PLANNING APPLICATION

Milton Keynes Council Development Control Committee made the decision to defer the Agora Planning Application at their meeting on Thursday 9th July.

This means that no decision has been made yet to approve or reject the scheme put forward by Brickhill Estates. The deferral of the decision took place because new information was submitted to the planners on Monday 6th July which related to the financial viability of the development. Milton Keynes Council have said that the application will be heard again on or before 3rd September. The application reference 15/00913/FUL and can be viewed on Milton Keynes Council's Planning website <http://bit.ly/110waTL>.

You can still make comments online using the Milton Keynes Council website, or by email direct to the Planning Officer Sarah Hine.

## NEIGHBOURHOOD PLAN REFERENDUM THURSDAY 30TH JULY

After over three years work, the Wolverton Town Centre Neighbourhood Plan goes to public referendum on Thursday 30th July 2015. All eligible electors within the Wolverton & Greenleys Town Council area should by now have received by post a polling card for the referendum vote.

Future Wolverton are running an official "Vote YES" campaign and we are keen for people to be able know as much as possible about the plan before they vote on the 30th July.

**To find out more about the Neighbourhood Plan and Referendum:**

Watch the VOTE YES Campaign Film: at <http://bit.ly/1KcVhUL>

Look at the information on Milton Keynes Council website: [www.milton-keynes.gov.uk/planning-and-building/planning-policy/wolverton-neighbourhood-plan](http://www.milton-keynes.gov.uk/planning-and-building/planning-policy/wolverton-neighbourhood-plan)

Read a copy of the plan: Copies are available at Wolverton Town Hall and at Wolverton, Stony Stratford and Central Milton Keynes Libraries.

If you have access to the internet, view or download a copy of the plan from: [www.FutureWolverton.org](http://www.FutureWolverton.org).

**VOTE**

**YES**



**FOR WOLVERTON TOWN CENTRE**

## LIVING ARCHIVE MILTON KEYNES

**Living Archive Milton Keynes (LAMK) is providing the opportunity for local elderly people living alone, in care homes or in palliative care, some suffering from dementia, to gain in self-esteem, feel less isolated and feel more valued through their new pilot project 'Lifelines'.**



tackle these issues in a positive and unique way, and in an area where little national investment has been made to meet the needs of this possible future time-bomb – of a large section of the community who feel unappreciated, uncared-for and discarded.'

89 year old Barbara Bennett has been one of the first to tell her story; 'I enjoyed it, because you don't often get to talk about yourself for so long, do you? The best thing was remembering things that I'd forgotten or hadn't thought were interesting to anybody else'.

Thanks to funding from MK Council and MK Community Foundation, LAMK are providing training and support to volunteer listeners. The outcome will be a series of recordings produced as CDs for the interviewees and their families to keep. Images will be digitised and archived, photo stories transcribed and an exhibition created to share these unique stories. The pilot will be filmed and a training booklet produced to provide a template for future more extensive projects.

Barbara's son John, says 'I think this project is fantastic, because not everyone is a writer and writing can take time and skill, whereas everyone has the skill of conversation. In Australia the knowledge of aboriginal elders is appreciated, whereas here older people are forgotten and so much has been lost'.

If you would like to know more about Living Archive Milton Keynes (LAMK) and their work 'to record, cherish and celebrate the lives of the people of Milton Keynes' you can sign up to a quarterly newsletter, find them on facebook and follow them on twitter. If you would like to make a donation this can be done by purchasing any of their books, DVDs, CDs and learning resources from the website or by making a donation through Local Giving.

The Vital Signs Report published by MKCF in 2013 revealed that 10,190 people over 65 were living alone in Milton Keynes. LAMK's Chairperson, Roger Kitchen explains 'People are living longer; more of them live alone or are supported only by non-family carers; and more people are likely to suffer dementia. The 'Lifelines' project seeks to

Local giving: [www.localgiving.com/charity/livingarchive](http://www.localgiving.com/charity/livingarchive)

Website: [www.livingarchive.org.uk](http://www.livingarchive.org.uk)

Facebook: [/livingarchive.7](https://www.facebook.com/livingarchive.7)

Twitter: [@livingarchive1](https://twitter.com/livingarchive1)

Email: [admin@livingarchive.org.uk](mailto:admin@livingarchive.org.uk)

Tel: 01908 322568

## A VERY HAPPY BIRTHDAY CELEBRATION FOR OUR LOCAL RESIDENT MR. LEONARD LEAN

Leonard is a local resident of Greenleys and a very dedicated attender at W&GTC meetings. As a member of the public at council meetings he makes it his business to have a wide knowledge of local issues. Should you need any information on local transport Mr. Lean is the person to speak to. Our Leonard also enjoys a good social life.



# HERITAGE LOTTERY FUNDING AWARDED TO UNCOVER THE RUGBY HERITAGE OF THE CITY

**To coincide with the Rugby World Cup coming to Milton Keynes this October, Living Archive MK has been successfully awarded a grant from the Heritage Lottery Fund for a 12 month project to document the history of Rugby in Milton Keynes.**

The aim of the Living Archive Milton Keynes is to 'give back' these stories to the community. The recordings and digital archive are a permanent resource for multi-media projects: musical dramas, concerts, documentaries, art and history displays, books and broadcasts, all held by and for the communities of Milton Keynes and district. The Archive also offers a precious resource for local schools, clubs, museums and societies, and for academic researchers, local and family history enthusiasts, enabling users to discover the story of our evolving communities, adding so much to the melting pot of national and international history.



This project's aim is to collect personal testimonies, photographs, film and memorabilia to document the history of Rugby in Milton Keynes over the last 100 years. The primary source material collected will be used to create a collection of digital stories, a website, an exhibition and a book.

Please get in touch with one of the team if you would like to share your stories and experiences or are interested to volunteer for the project.

Living Archive MK believes that we are all a walking, talking, living history and the team are looking for Milton Keynes people involved in Rugby to come forward with their stories, images, film and memorabilia to document and share with future generations in Milton Keynes.

[admin@livingarchive.org.uk](mailto:admin@livingarchive.org.uk)  
01908 322 568  
[www.livingarchive.org.uk](http://www.livingarchive.org.uk)  
[www.facebook.com/livingarchive.7](https://www.facebook.com/livingarchive.7)  
Follow us on twitter: @livingarchive1



# ...IN THE CLUB

## WOLVERTON TOWN Cricket Club

The weather is affecting a lot of our Saturday Cherwell League fixtures. Both the First and Second teams are having mixed results and are both mid table in their respective leagues. The Wolverton Town Knock out cup for the first time in many years has been cancelled as only 5 teams expressed an interest to enter. A lot of hard work has gone into the wicket and ground especially from Malcolm Rose and Roger Garrini helped by a number of other members. The club also took advantage of the generous Jewson offer which supported CricketForce 2015. In addition the club has purchased roll on/roll off covers with the generous help of Wolverton & Greenleys Town Council and Sport MK.

Kevin Pichowski & Colin Kightley have been coaching in local schools. Kevin at Slated Row School in Old Wolverton and Colin at Greenleys Infants School. The club also hosted



a Kwik Cricket Festival for Bucks Cricket Board. Eight local schools participated with Bushfield winning the Boys Section and Middleton winning the Girls section. They then represent Milton Keynes at the County Finals in High Wycombe. Congratulations must go to Bushfield's Boys who won the County Final. The Junior teams are having a good season, not always winning, but a lot of effort and good cricket is being played. We are now coming to the end of our regular league season but a number of friendly games are still being arranged. Junior practice night is on Fridays at Osborne Street, Wolverton from 6.15 to about 8. Anyone is welcome to turn up both boys and girls from 5 year olds to 16 year olds. We are running 4 junior teams in leagues and hope to field other teams in friendly matches.

The club require volunteer helpers on Friday practice night so any Young Leaders, Duke of Edinburgh scheme participants or parents are asked to get in touch with the contact listed below. The club is also seeking adult players. You may be new to the area or wanting to start up again after a break, or just want a new challenge at a different club. Please get in touch. Should you be interested in joining the club please contact Kevin Pichowski on [kevinpichowski@yahoo.com](mailto:kevinpichowski@yahoo.com) or 07778 535009 in the first instance.

## WOLVERTON TOWN Football Club



A new season starts for Wolverton Town Football Club at The New Park, Field Lane, Greenleys on the 8th August 2015 when the first team play Clean Slate FC at 3pm. The Sunday season starts on 6th September 2015.

The club is looking for sponsorship (examples below) and advertising in the first team programme for next season:

**GOLDEN BALLS PACKAGE** (40 TRAINING BALLS & 10 MATCH BALLS) - £500

**10 MATCH BALLS PACKAGE** - £250

**20 TRAINING BALLS PACKAGE** - £150

**PITCHSIDE BOARD** - £350

ALL SPONSORSHIP DEALS ABOVE WILL INCLUDE LINK ON CLUB WEBSITE AND SOCIAL NETWORKS, LOCAL PRESS EXPOSURE, AND A HALF PAGE ADVERT IN THE 1ST TEAM PROGRAMME.

PROGRAMME ADVERTISING (season 1 – all first team home games)

**Back page** (colour) £225

**Inside cover** (colour) £180

**Full page** (colour) £150 (b/w) £120

**Half page** (colour) £100 (b/w) £80

**Quarter page** (colour) £50 (b/w) £40

CONTACT: Amanda Keech 07930055462 or Christine Greenwood 07724137422

[www.wolvesfc.org](http://www.wolvesfc.org) [christine@wolvesfc.org](mailto:christine@wolvesfc.org)

## WOLVERTON TOWN Bowls Club

### "The Friendly Club"

On Saturday 20th June we held our annual "Brown Cup" tournament. This trophy was first competed for in 1933, and the competition has continued in various formats since then, including the period 1939-1945. The competition is named after Mr.W.J. Brown, who was our Club President at that time and also held the posts of County Bowls Association Secretary and President.

On this occasion sixteen players took part, these were split into teams of four, each team playing the other three teams on a 'round robin' basis. A number of our newest players took part, including our three youngest players Courtney Preston, Paige Savory and Jack Greening.

Although the afternoon was interrupted by an untimely shower of rain, everybody enjoyed the tournament, which was ultimately won by the team consisting of Debbie English, Dee Miller, Ray Evans and Gareth Tysoe.

For further information call:

Bruce Goldsmith 01908 310514 or Dave Tysoe 07746954164  
e-mail: [bowlclubwolvertontown@gmail.com](mailto:bowlclubwolvertontown@gmail.com)

Clubhouse and Bowling Green: Cambridge Street, Wolverton



## ROTARY'S LOOP-THE-LOOP AND GOLF DAY ADD OVER £7,000 TO THE HAZEL AMBULANCE APPEAL

A sponsored 'Loop-the-Loop' in a glider event held by Wolverton & Stony Stratford Rotary Club in aid of its appeal to buy a new ambulance for Willen Hospice has raised nearly £4,000. A total of 14 flights took place at the London Gliding Club at Dunstable Downs on 22nd May with each participant experiencing an exhilarating full loop in the air in a glider.

Rotarian John Moss, the event organiser, said "It was a fantastic evening and a great opportunity to raise funds for our Ambulance Appeal. I'd like to thank all the 'loopers' and their sponsors, and the London Gliding Club and its pilots."

The Appeal received another boost of £3,100 from the Rotary club's Annual Charity Golf Day, now in its 8th year, at Abbey Hill Golf Club on 3rd June. "We had 14 teams this year and were blessed with a lovely dry and sunny day. Over 80 people attended the evening meal and auction and our thanks go to all the golfers, our sponsors and Abbey Hill" commented organising Rotarian Malcolm Poulter.

The Hazel Ambulance Appeal was set up by the club when Rotarian Brian Stuart's wife Hazel passed away at the Hospice

last November.

The aim is to raise £34,000 for a new fully-fitted ambulance

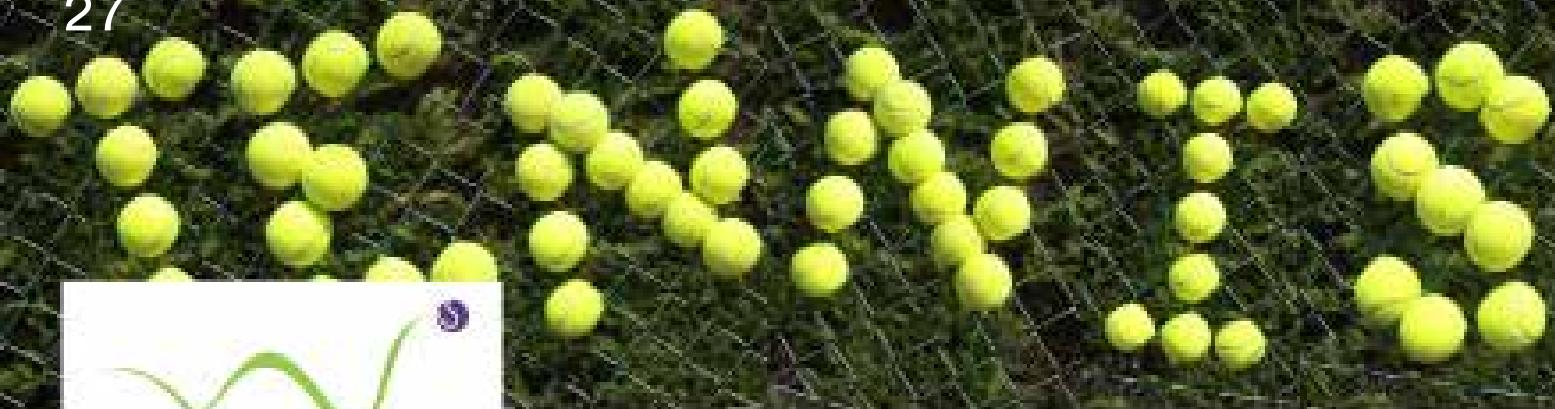
to transport patients to and from Willen's Wellbeing Centre. The Appeal is already well past the halfway mark, and with more fundraising events planned, the club hopes to be able to present the ambulance to the hospice before the end of the year.

More information about the club's activities can be found at [www.wolvertonandstonystatfordrotaryclub.co.uk](http://www.wolvertonandstonystatfordrotaryclub.co.uk), where there is also a link to [www.justgiving.com/rotary-wolverton](http://www.justgiving.com/rotary-wolverton) for anyone wishing to support the appeal.

Mike Thomas, PR & Communications Officer, Wolverton & Stony Stratford Rotary Club

Tel: Home: 01908 320517; Mobile: 07733 447447 email: [michaeljthomas@btinternet.com](mailto:michaeljthomas@btinternet.com)





Want to play tennis? Contact [wolvertontennis@hotmail.com](mailto:wolvertontennis@hotmail.com) for more details! Find us on Facebook at [WolvertonTennisClub](https://www.facebook.com/WolvertonTennisClub) or call Pete on 07740 004 548

May saw the return of the Great British Tennis Weekend to the UK and Wolverton Tennis Club were no exception. Combining our Annual Open Day with the chance for FREE tennis for everyone we saw a very busy day ahead.

Starting from 10am, the juniors had court priority where Level 3 Coach Pete Tolaini and his team of tennis leaders and Assistant Coach Rob Small ran games, tournaments and coaching sessions from ages as little as 3 up to 17, plus parents got involved too!

Adults got court time after midday when the service speed machine competition started, plus a whole court dedicated to the ball machine, where everyone took turns in attempting to return as many balls as possible - preferably over the net! Both proved very popular with quick moving queues all afternoon.



Although a windy day, the sun shone on us allowing everyone to enjoy the BBQ and refreshments kindly run by volunteers and members of the club.



To top it off, there was even an impromptu Rusty Racquets coaching session, ideal for adults wanting to take up tennis for the first time, or returning to the game after a few years away. The aim is to hit lots of tennis balls, do drills and play games with tips to playing doubles whilst building your confidence and having fun. These sessions run all year round in 6week courses, if it sounds like something you would like to have a go at yourself, please contact Pete Tolaini for dates and times of the next session: 0774004548

Don't miss out on our Junior and Mini's Summer Camp run by Rob Small from 17th - 21st August. Contact [wolvertontennis@hotmail.com](mailto:wolvertontennis@hotmail.com) for more information and to book your place!



Thanks to our Sponsors: Maisies, Harmony Beauty, The Grange Indian Restaurant, Blacksheep, Prime Pet Supplies.



# Wyvern School

learning together



Aylesbury Street, Wolverton, Milton Keynes, MK12 5HU

☎: 01908 312275 Fax: 01908 222149 ✉ office@wyvernschool.org

Headteacher: Mrs H Hann

Deputy Headteachers: Mrs G Gupta & Mrs R Morgan

## WOULD YOU LIKE TO BECOME A SCHOOL GOVERNOR?

*Do you want to make a real difference to children of Wolverton? Would you like to learn some new skills and work with like-minded people? Then why not become a School Governor?*

**We are looking for new Governors!**

Wyvern School, in partnership with Bushfield, forms the Wolverton Learning Trust. We are a Cooperative Learning Trust which aims to raise attainment across Wolverton and work in partnership to educate our community's children. Wyvern School is a thriving community of 420 enthusiastic and engaging pupils aged 3-7 years.

**What does a Wyvern School Governor do?**

- As a governor you will promote high standards of educational achievement and success;
- Champion children of all abilities and across all backgrounds;
- Support the Headteacher and school team in delivering objectives and improving achievement and attainment, as well as working with the Governing Body to provide strategic direction;
- Be able to offer between six and eight hours of your time each month.

We are particularly looking for people with experience in Finance and ICT, but equally all applicants will be considered. We would like our Governing Body to reflect the vibrant and diverse community that is Wolverton. You will be given all the necessary training and be fully supported by your fellow Governors and staff at Wyvern, as well as Milton Keynes Governor Services.

If you would like to help us make a real difference to our school, please contact us on 01908 312275 or email us at office@wyvernschool.org to discuss this position and how to apply.

If you would like any additional information about becoming a School Governor please contact Governor Services on 01908 253614 / 01908 253623 or email to schoolgovernors@milton-keynes.gov.uk. Alternatively visit <http://www.milton-keynes.gov.uk/schools-and-lifelong-learning/school-governors>.



Wyvern School

...learning together...

Wyvern School is committed to the safeguarding of children

**Glowing Designs**

Trendy Fashion Accessories  
For Men, Women and Children




Hats      Bags      Scarves/Bowties  
Leggings   Purses      Belts  
Wallets      Umbrellas      Jewellery

Unit 33A, The Agora Centre, Church Street, Wolverton, MK12 5LG  
Telephone: 01908320813 Email: info@glowingdesigns.co.uk  
Website: www.glowingdesigns.co.uk

**★ YOGA ★**

**Bath House and Community Centre**  
Tuesday pm 8-9.15  
Wednesday am 9.30-11

All ages and abilities welcome

Call Lisa on 01908 312107  
[lisa.jetschill@gmail.com](mailto:lisa.jetschill@gmail.com)  
[www.jetschill.co.uk](http://www.jetschill.co.uk)

**PETE'S PLANTS & GARDENING SERVICES**

General gardening work undertaken


Fully insured  
Tel: 01908 313580  
Mob: 07531 292288



**Explorers**

FREE CLUB!!!  
for school years Reception to Year 2

New time and day!



games  
arts  
points + prizes!  
crafts  
Bible stories

Now on...  
**Friday's**  
4.30pm to 5.30pm  
at  
Wolverton Evangelical Church  
108a Church Street  
For more info please call  
Allan Huxtable 01908 319719

[www.wolvertonevangelicalchurch.org](http://www.wolvertonevangelicalchurch.org)

**MEETING ROOM FOR HIRE**

at the Town Hall in Wolverton

Rates from as little as £4 per hour  
Seats 16 people boardroom style  
Other seating arrangements are available

**Call 01908 326800**  
for more details and to book



### *Hair Hair & Beauty Ltd*

57 The Triangle Building, Wolverton Park Road  
Wolverton MK12 5GX  
Phone 01908 330222 Email: [hairandbeauty@gmail.com](mailto:hairandbeauty@gmail.com)  
Website: [www.hairandbeauty.co.uk](http://www.hairandbeauty.co.uk)

Experiences required to join our ever expanding, friendly and professional team, preferably with at least two years experience working in the beauty or spa industry. Be qualified in waxing, massage (include spray tans, manicures, pedicures and gel polish), minimum qualifications of NVQ Level 3 in Beauty. Full or part time available. If you are looking for a rewarding and varied role where you manage your own busy team then please contact **Chryl** or **Hayley** on 01908 330222.



Find us on Facebook  
**MONU**  
PROFESSIONAL SKINCARE

*Get a Skin-Fit to your Skin*  
*Making your skin affordable*



### Sanctuary Oasis Limited



Care and support for your loved ones in their own home and in the way they choose.

- Elderly Care
- Learning Disabilities
- Physical Disabilities
- Homelessness
- Dementia



Please call the office on  
01908322839/07746177033  
Out of Hours 07834545614  
[sanctuaryoasisltd@gmail.com](mailto:sanctuaryoasisltd@gmail.com)  
[www.sanctuaryoasisltd@gmail.com](http://www.sanctuaryoasisltd@gmail.com)  
Town Hall, Creed Street,  
Wolverton, Milton Keynes  
MK12 5LY

# INVITATION

## Thinking of Selling or Letting?

This is your personal invitation to receive a free valuation of your property and to discuss all aspects of selling or letting your home with our local experienced sales and lettings teams.

All of our staff have a wealth of knowledge of the local area and would be delighted to spend time discussing a marketing package best suited to you.

To arrange a convenient appointment please call:

#### Bletchley Office: Sales

41a Queenway, Bletchley, Milton Keynes MK2 2DR  
01908 373583

#### Wolverton Office: Lettings

58 Church Street, Wolverton, Milton Keynes MK12 5JW  
01908 373583



Est. 2009

# Marc Davies

---

## Bespoke Interiors Ltd

An award-winning cabinet-maker based in Wolverton, creating furniture that fits those awkward spaces, looks beautiful and lasts a lifetime




\* Tailor-made furniture \* Handmade Kitchens  
\* Fitted Wardrobes \* Free-standing furniture

Call to arrange a free quotation

marco@mdbespoke.co.uk / 07706 470 869 / www.mdbespoke.co.uk



## We make a difference in Milton Keynes

**A visit from Age UK Milton Keynes can help an older person feel supported and secure**

- Befriending, advocacy, information and advice
- Handy person, gardening, housework and shopping services, toenail-cutting in your home
- Sitting service for carers, 12 lunch clubs, hospital aftercare service and home energy checks



To find out more about how we can help please call 01908 550700

Registered charity 1029773 [www.ageukmiltonkeynes.org.uk](http://www.ageukmiltonkeynes.org.uk)



## Tennis Summer Camp

17th - 21st August 2015

Join us this summer for a week of great tennis!  
Everyone welcome, fun games to be played and we'll supply the racquets and balls!

	Minis: (6-9yrs)	9.30am - 10.30am
	Juniors: (10-16yrs)	10.45am - 12.45pm
5 day rate	Minis: Members	£15
	Minis: Non Members	£20
	Juniors: Members	£30
	Juniors: Non Members	£40

Daily rates available on request. Please contact Rob for any questions or to book Tel: 07970 033446 Email: wolvertontennis@hotmail.com

## CONCRETE CIRCUS

Concrete Circus moved to Wolverton in December 2014 and now meets at Wolverton Scout Hut. We are a voluntary youth circus workshop teaching as many different circus skills as we can manage and cater to any child Year 2 or older. Students at Bushfield will have seen us at an assembly as we tried to demonstrate a variety of the skills we cover including stilt walking being shown by a Bushfield student.

We run the following sessions:

Sundays 9 -10 & 10 - 11 General Sessions - covers hand-eye, skills, balance skills and hula hoop, Sundays 11 -12 basic aerial, acrobatics and acrobalance, Mondays 4.30 - 6 Unicycle, Fridays 4.30 - 6 Aerial and conditioning. All sessions cost £4 apart from the Friday class which is £6 (there are savings if you attend multiple Sunday classes). We will be closed during August but we will be running two one day workshops during the summer holidays, these will run from 9am - 3pm and cost £15. Dates for the workshops are Monday 27th July and Wednesday 26th August. For all enquiries and to book on to workshops please e-mail [nigel@itshim.co.uk](mailto:nigel@itshim.co.uk)



**July 2015**

A big thank you to those of you that came to the Urb Farm Summer Open Day on 21st June!! It was so great to have so many of you there, and we feel very lucky to have such great supporters. The sun shone beautifully and the Farm looked fantastic after the hard work of Team GP's trainees, volunteers and staff over the last few weeks. Thank you also to the volunteers that worked so tirelessly on the day (we couldn't have done it without you!) and the musicians who kept us entertained in the sunshine.



A first update from trainee Courtney: Last week our chicken Beyoncé wouldn't move when we were cleaning out the chicken house. Whenever we tried to touch or move her she would quickly turn her head and grumble at us. The reason she was doing all of that was because she had laid an egg and was protecting it.



A second update from trainee Courtney: these large and smooth *Coeur d'Albenga* (Ok Heart) tomatoes are going to start ripening within the next 2-3 weeks. If you want to place an order or have a look at details etc: then sign up to Veggie Mail (see below to find out how). Just a quick opinion, I think these tomatoes look a little like pumpkins!



We are pleased to say that the Urb Farm ducks, Dizzy and Lizzy, are now living in our proper pond, having upgraded from their paddling pool! They are enjoying swimming around and continue to make lots of noise to remind us that they're there!

To sign up to Veggie Mail and receive a list of available produce, please email [boxscheme@mkchristianfoundation.co.uk](mailto:boxscheme@mkchristianfoundation.co.uk). For more regular updates on the Farm, please search for "Growing People" on Facebook.

# TAI CHI



**Learn the Long Yang form**  
- 20 minutes of gently flowing movement

**Beginners class starts Weds 16<sup>th</sup> September**  
6.00 pm

**Wolverton West End United Church hall**  
(corner of Church Street and Anson Road)

**Contact: David on 01908 317732**  
[www.taichiwolverton.org.uk](http://www.taichiwolverton.org.uk)

# ADVENTURERS



**FREE CLUB!!!**  
FOR SCHOOL YEARS  
3 TO YEAR 6

games  
+ arts  
+ points  
+ prizes!  
+ crafts  
+ Bible  
+ stories

Fridays  
6pm - 7.15pm  
at  
Wolverton Evangelical Church  
108a Church Street  
For more info please call  
Allan Huxtable 01908 319719

[www.wolvertonevangelicalchurch.org](http://www.wolvertonevangelicalchurch.org)

**Forties Weekend 5<sup>th</sup> – 6<sup>th</sup> September**

Join us for a very special celebration of the sights, sounds and flavours of the 1940s!  
Over the two days you can look forward to:

- The ever popular Miss Lola Lamour singing popular songs from the war years
- Singing Major James Cooper Watson with singalongs and musical entertainments
- Three home guard battalions
- Free French military display of artefacts
- Ministry of Food
- Home front display
- Red Cross re-enactors
- RAF re-enactors
- Military and civilian vehicles of the era
- Fire-fighters
- Vintage stalls
- Vintage tea room with dance floor and music for anyone wanting to dance
- Angel public house open for business
- Re-enactors bringing the whole experience to life

**Heritage Open Days and Museum Beer Festival 10<sup>th</sup> – 13<sup>th</sup> September**

Four days each year when you can sample all the delights of the museum without paying a penny!  
We've been participating in the National Heritage Open Days scheme for many years and love welcoming visitors to discover heritage for themselves.

While you're visiting, you might like to pop into the Angel Inn in our street of shops for a taste of one of our special collection of real ales and ciders.

**Transport Day 20<sup>th</sup> September**

Be transported back to a time when there was nothing to beat the joys of the open road  
A wheely great day out is in prospect as MK Museum hosts its annual Transport Festival.  
Each year more than 250 vehicles take over the Museum site travelling from all over the country.  
Buses and coaches, military vehicles, motorbikes, minis and much, much more are among those who will be revving engines and allowing the rest of us to relive the days when motoring was about romance and the joy of an open road.

The Festival also boasts craft stalls, model railway displays, a BBQ, plus all the Museum's other popular attractions.

Come and join us at...

# Tuesday Toddler Group



All  
welcome  
catch up  
over a  
free cuppa  
of charge

Tuesdays  
1.15pm - 2.45pm  
at  
Wolverton Evangelical Church  
down the alley beside  
108a Church Street  
For more info please call  
Mandy 01908 319719  
or Jane 01908 562710

during term time only

[www.wolvertonevangelicalchurch.org](http://www.wolvertonevangelicalchurch.org)

Now Available At  
**Maisies Superstore**



**Radcliffe School**  
**Blazers, Ties and Jumpers**



**Stantonbury Campus**  
**Blazers, Ties, Jumpers**  
**& P.E Kit**

**school-kit.co.uk**  
 top marks for value and quality



**Maisies Superstore**

MAISIES, 60/64 Church Street, Wolverton, Milton Keynes. MK12 5JW  
**01908 313313 • [www.maisies-superstore.co.uk](http://www.maisies-superstore.co.uk)**

# WOLVERTON BUSINESS AND ENTERPRISE ALLIANCE



**The discussion at the latest WBEA meeting ranged from ideas for future events, what the alliance stands for and how to find business owners and entrepreneurs who don't have a "shop front", i.e. home based businesses.**

## Finding Home Based Entrepreneurs in Wolverton

There are 2.9 million home-based businesses in the UK and latest research has found that 70% of new businesses start off in the home. We must have a sizeable number of home based enterprises in Wolverton. The town has businesses that are visible everyday but WBEA is really keen to include self employed people, entrepreneurs and home based workers. They may live here but work in other locations, even run an online business. Current member of WBEA, Claire Morse, fits this profile.



Claire Morse - home based entrepreneur

Claire lives in Wolverton and is one of the 2.9 million. Her family circumstances mean that she is not considering employment, so last year she took the decision to become self employed. She set up a home based business, Ruby Lou's Recreations, enabling her to use

her skills and talents for creating and making and draw an income from it. Claire creates unique home accessories through recycling and up cycling pre-loved clothing and

fabric. As a small start up enterprise she sells online, on stalls and to targeted audiences at fayres and maker events.

## Speaking as a new entrepreneur Claire points out:

"It can be very isolating working from home. As you have no 'shop' window, you need to work extra hard to make your business visible and there is the challenge of there being no 'team' to bounce ideas off of - you have to rely on friends and family.

"I feel that WBEA is very important to me as it gives me the opportunity to meet other like minded people, where we can share skills and perhaps do trade offs. I will be able to tap into others' business knowledge and learn about running a business. It may also throw up possible future partnerships/alliances".

**Meetings take place on the first Tuesday of the month in the Meeting Suite of the Old Bath House, Stratford Road.**

### Contact details:

E: [wolvertonbea@gmail.com](mailto:wolvertonbea@gmail.com)  
@WolvertonBEA

Find us on face book Wolverton Business and Enterprise Alliance and start a conversation

Find us on #TheBestofMK and dairy dates in Essentially Local

## THE SECRET GARDEN CONCERTS

**Would you be interested in running some Sunday afternoon concerts at The Secret Garden this summer?**

We are looking for someone to find performers willing to play at The Secret Garden on some Sunday afternoons during the summer months. Our caretaking staff would be able to supply support by erecting gazebos, installing generators etc. but we need someone to find performers and keep the town council informed as to who is performing to enable them to promote the events. If you are interested in helping out then please call the town hall on **01908 326800** or email **Dianne Bowyer at [diannebowyer@wolvertonandgreenleystowncouncil.gov.uk](mailto:diannebowyer@wolvertonandgreenleystowncouncil.gov.uk)**

**FREE QUOTES**

charlie & leo  
STUDIOS

**IT'S NOT ABOUT US**

**IT'S ABOUT  
WHAT WE DO  
FOR YOU**

talk  
to us

**01908 889042**

**DESIGN | ADVERTISING | BRANDS**



## WOLVERTON ON FILM DVDS

If you missed the three Wolverton on Film screenings at the Scout Hall earlier this year, or if you want to relive the experience, you can now purchase DVDs of the first two screenings (a third DVD will be available shortly).

Volume 1 consists of 10 films including Nobby Newport's last run and a portrait of Essam's Shoe Shop. Volume 2's contents include a film of the 150 Festival in 1988, and a celebration of Wolverton's Carnivals from 1963 to 1976.

The DVDs each contain more than an hour's worth of really interesting material and are available from Mrs B's Emporium in Church Street, Milton Keynes Museum, or online from Living Archive Milton Keynes ([www.livingarchive.org.uk](http://www.livingarchive.org.uk)). They cost £10 each (+ £2.99 postage if ordered on line).

**A DATE FOR YOUR DIARY:** The next Wolverton on Film screening will be on Saturday 10<sup>th</sup> October 2015 at 3pm and 7pm at the Scout Hall.

Among the films to be shown will be a special documentary about the Little Streets. Tickets cost £3 and will be available from Mrs B's Emporium from September



## BE A RECORD BREAKER THIS SUMMER

Record Breakers is the 17th national Summer Reading Challenge produced by The Reading Agency and delivered by libraries all over the UK. Milton Keynes Libraries are inviting children of all ages to take part once again this year.

Children's reading can "dip" during the summer holidays. The Reading Agency's Annual Summer Reading Challenge helps by getting nearly one million children into libraries (around 2,900 in Milton Keynes last year) to maintain reading skills and confidence, because everything changes when we read.

We want as many children as possible to read or have help reading six library books over the summer holidays. This year's theme of Record Breakers will inspire children in Milton Keynes to learn about and celebrate achievements and personal bests. Along the way there are stickers (watch out some of them are stinky!) and a bookmark to collect, plus a certificate and medal for completing the challenge, while stocks last.

Volunteers will act as reading role models for the children, sign them up to the challenge, track their progress, hand out incentives, help them find their next book and most importantly, speak with them about what they have been reading.



In 2014 we had our highest participation and challenge completers to date and in line with this year's record breaking theme we would like to smash that record again this year, especially those completing the challenge!

Record Breakers is FREE and it is simple to sign up. Just come into any Milton Keynes Library. The Challenge begins Friday 17th July and ends Sunday 13th September.

With thousands of great books waiting to be read at the local library there is no need for boredom during the long summer break.

## JULY

### Sunday 26th

9.00, 10.00 & 11.00 Concrete Circus general sessions at Wolverton Scout Hut

### Monday 27th

16.30 Concrete Circus unicycle sessions at Wolverton Scout Hut

### Tuesday 28th

14.00 Play session at Stacey Bushes Play Builder  
14.00 Play session at Hodge Lea Pavilion

### Wednesday 29th

9.30 Yoga at The Old Bath House  
10.00 Age Uk Milton Keynes Info&Advice Service at W&GTC  
14.00 Play session at Western Road Recreation Ground

### Thursday 30th

10.00 Age Uk Milton Keynes Info&Advice Service at WHC  
14.00 Play session at Greenleys MUGA

### Friday 31st

14.00 Storytime for under 5s at Wolverton Library  
16.30 Explorers at Evangelical Church  
18.00 Adventurers at Evangelical Church

## AUGUST

### Saturday 1st

9.00 Wolverton Community Farmer's Market at TC Car Park  
10.00 Who let the Dad's out at Bushfield School

### Sunday 2nd

14.00 Kickboxing at Millmead Hall

### Tuesday 4th

14.00 Play session at Western Rd. Rec.Ground&Stacey Bushes Play Builder  
20.00 Yoga at The Old Bath House

### Wednesday 5th

9.30 Yoga at The Old Bath House  
10.00 Age Uk Milton Keynes Info&Advice Service at W&GTC

### Thursday 6th

10.00 Age Uk Milton Keynes Info&Advice Service at WHC  
10.30 Book Group in Wolverton at Town Hall  
14.00 Play session at Stacey Bushes Play Builder and Victoria Park

### Friday 7th

14.00 Storytime for under 5s at Wolverton Library  
14.00 Play session at Hodge Lea Pavilion  
16.30 Explorers at Evangelical Church  
18.00 Adventurers at Evangelical Church

### Sunday 9th

14.00 Kickboxing at Millmead Hall

### Tuesday 11th

14.00 Play session at Hodge Lea Pavilion and Victoria Park  
20.00 Yoga at The Old Bath House

### Wednesday 12th

9.30 Yoga at The Old Bath House  
10.00 Age Uk Milton Keynes Info&Advice Service at W&GTC  
14.00 Play session at Greenleys MUGA

### Thursday 13th

10.00 Age Uk Milton Keynes Info&Advice Service at WHC  
14.00 Play session at Greenleys MUGA

### Friday 14th

14.00 Play session at Hodge Lea Pavilion  
16.30 Explorers at Evangelical Church  
18.00 Adventurers at Evangelical Church

### Saturday 15th

9.00 Wolverton Community Farmer's Market at TC Car Park

### Sunday 16th

14.00 Kickboxing at Millmead Hall

### Monday 17th - Friday 21st

9.30 Tennis Summer Camp - minis at WTC  
10.45 Tennis Summer Camp - juniors at WTC

### Tuesday 18th

20.00 Yoga at The Old Bath House  
14.00 Beach Party MKDons set&MK Play Rangers Western Rd. Rec Ground

### Wednesday 19th

9.30 Yoga at The Old Bath House  
10.00 Age Uk Milton Keynes Info&Advice Service at W&GTC  
14.00 Play session at Stacey Bushes Play Builder

### Thursday 20th

10.00 Age Uk Milton Keynes Info&Advice Service at WHC  
14.00 Play session at Stacey Bushes Play Builder

### Friday 21st

14.00 Storytime for under 5s at Wolverton Library  
16.30 Explorers at Evangelical Church  
18.00 Adventurers at Evangelical Church

### Sunday 23rd

14.00 Kickboxing at Millmead Hall

### Tuesday 25th

14.00 Play session at Greenleys MUGA  
20.00 Yoga at The Old Bath House

### Wednesday 26th

9.30 Yoga at The Old Bath House  
10.00 Age Uk Milton Keynes Info&Advice Service at W&GTC  
14.00 Play session at Greenleys MUGA

### Friday 28th

14.00 Storytime for under 5s at Wolverton Library  
16.30 Explorers at Evangelical Church  
18.00 Adventurers at Evangelical Church

### Sunday 30th

14.00 Kickboxing at Millmead Hall

## SEPTEMBER

### Tuesday 1st

20.00 Yoga at The Old Bath House

### Wednesday 2nd

9.30 Yoga at The Old Bath House  
10.00 Age Uk Milton Keynes Info&Advice Service at W&GTC

### Thursday 3rd

10.00 Age Uk Milton Keynes Info&Advice Service at WHC  
10.30 Book Group in Wolverton at Town Hall

### Friday 4th

14.00 Storytime for under 5s at Wolverton Library  
16.30 Explorers at Evangelical Church  
16.30 Concrete Circus aerial&conditioning sessions at Wolverton Scout Hut  
18.00 Adventurers at Evangelical Church

### Saturday 5th

10.00 Who let the Dad's out? at Bushfield School  
9.00 Wolverton Community Farmer's Market at TC Car Park  
14.30 Grow, Bake & Make Show at Wyvern School

### Saturday 5th & Sunday 6th

Forties weekend at Milton Keynes Museum

### Sunday 6th

9.00, 10.00 & 11.00 Concrete Circus general sessions at Wolverton Scout Hut  
14.00 Kickboxing at Millmead Hall

### Monday 7th

16.30 Concrete Circus unicycle sessions at Wolverton Scout Hut

### Tuesday 8th

13.15 Toddler Group at Evangelical Church  
20.00 Yoga at The Old Bath House

### Wednesday 9th

9.30 Yoga at The Old Bath House

10.00 Age Uk Milton Keynes Info&Advice Service at W&GTC

### Thursday 10th

10.00 Age Uk Milton Keynes Info&Advice Service at WHC

### Thursday 10th - Sunday 13th

Heritage Open day & Beer Festival at MK Museum

### Friday 11th

14.00 Storytime for under 5s at Wolverton Library  
16.30 Explorers at Evangelical Church  
16.30 Concrete Circus aerial&conditioning sessions at Wolverton Scout Hut  
18.00 Adventurers at Evangelical Church

### Sunday 13th

9.00, 10.00 & 11.00 Concrete Circus general sessions at Wolverton Scout Hut  
14.00 Kickboxing at Millmead Hall

### Monday 14th

16.30 Concrete Circus unicycle sessions at Wolverton Scout Hut

### Tuesday 15th

13.15 Toddler Group at Evangelical Church  
20.00 Yoga at The Old Bath House

### Wednesday 16th

9.30 Yoga at The Old Bath House  
10.00 Age Uk Milton Keynes Info&Advice Service at W&GTC  
18.00 Tai Chi Beginners Class at West End United Church

### Thursday 17th

10.00 Age Uk Milton Keynes Info&Advice Service at WHC

### Friday 18th

14.00 Storytime for under 5s at Wolverton Library  
16.30 Explorers at Evangelical Church  
16.30 Concrete Circus aerial&conditioning sessions at Wolverton Scout Hut  
18.00 Adventurers at Evangelical Church

### Saturday 19th

9.00 Wolverton Community Farmer's Market at TC Car Park

### Sunday 20th

9.00, 10.00 & 11.00 Concrete Circus general sessions at Wolverton Scout Hut  
11.30 & 15.00 Scarecrow Festival at Community Orchard  
14.00 Kickboxing at Millmead Hall Transport Day at MK Museum

### Monday 21st

16.30 Concrete Circus unicycle sessions at Wolverton Scout Hut

### Tuesday 22nd

13.15 Toddler Group at Evangelical Church  
20.00 Yoga at The Old Bath House

### Wednesday 23rd

9.30 Yoga at The Old Bath House  
10.00 Age Uk Milton Keynes Info&Advice Service at W&GTC

### Thursday 24th

10.00 Age Uk Milton Keynes Info&Advice Service at WHC

### Friday 25th

14.00 Storytime for under 5s at Wolverton Library  
16.30 Explorers at Evangelical Church  
16.30 Concrete Circus aerial&conditioning sessions at Wolverton Scout Hut  
18.00 Adventurers at Evangelical Church

### Sunday 27th

9.00, 10.00 & 11.00 Concrete Circus general sessions at Wolverton Scout Hut  
14.00 Kickboxing at Millmead Hall

### Monday 28th

16.30 Concrete Circus unicycle sessions at Wolverton Scout Hut

### Tuesday 29th

13.15 Toddler Group at Evangelical Church  
20.00 Yoga at The Old Bath House

### Wednesday 30th

20.00 Yoga at The Old Bath House

# WOLVERTON & GREENLEYS

## TOWN COUNCIL

### ADDRESS:

Town Hall,  
Creed Street,  
Wolverton  
MK12 5LY

**TELEPHONE:** +44 (0)1908 326800

### OFFICE OPEN HOURS:

Monday, Tuesday, Thursday & Friday 10:00 - 15:00  
Wednesday 13:00 - 16:00

**For environmental issues call for the Area Caretakers**  
on 01908 326800 (Office Hours)

### STAFF:

**Sally McLellan** - Town Clerk  
**Mandy Shipp** – Assistant to the Town Clerk  
**Dorothy Parker** - Finance and Administration Officer  
**Dianne Bowyer** - Projects Officer  
**Faith Gyimah** – Administration Apprentice  
**Ashley Randall** - Area Caretaker  
**Alec Brindle** - Assistant Caretaker

**Email:** office@wolvertonandgreenleystowncouncil.gov.uk  
**Website:** www.wolvertonandgreenleystowncouncil.gov.uk

## CONTACT YOUR TOWN COUNCILLORS:

### Greenleys Ward:

**Ellen Robinson** on 07415 059108/01908 321688  
**Beverley Sabey**, Chair of Personnel Committee  
on 07913 920394  
**Terri Henry** at [t\\_roberts83@hotmail.co.uk](mailto:t_roberts83@hotmail.co.uk)

### Wolverton East Ward:

**Jess Holroyd** on 01908 315342  
**Tom Bulman** on 01908 209960  
**Paul Sedgwick** on 01908 320512  
**Stephen Bryant** on 01908 313005

### Wolverton West Ward:

**Hilary Saunders**, Chair of Personnel Committee  
on 01908 319271  
**Mike Galloway**, Chair of Planning committee  
on 07789 680420 or [mike@wolverton.org.uk](mailto:mike@wolverton.org.uk)  
**Adrian Moss** on 07905 319140  
or [adrian@bagpuss-and-baxter.org.uk](mailto:adrian@bagpuss-and-baxter.org.uk)  
**Patricia Gates** on 07811 256427 or [pat.gates@sky.com](mailto:pat.gates@sky.com)

### Hodge Lea Ward:

**Pamela Johnstone** on 01908 313639  
**Kevin Keenan**, Vice Chair of Council on 07736 071567  
or [kevkeenan@hodge-lea.com](mailto:kevkeenan@hodge-lea.com)

### Stacey Bushes Ward:

**Janet Irons** on 01908 222651  
**Ansar Hussain**, Chair of Council on 07742 637638  
or at [cllr.hussain@gmail.com](mailto:cllr.hussain@gmail.com)

### Milton Keynes Ward Councillors:

**Peter Marland**, Tel: 07769 365316 or email:  
[peter.marland@milton-keynes.gov.uk](mailto:peter.marland@milton-keynes.gov.uk)  
**Norman Miles**, Tel: 07825 521253 or email:  
[norman.miles@milton-keynes.gov.uk](mailto:norman.miles@milton-keynes.gov.uk)  
**Robert Middleton**, Tel: 07849 725830 or email:  
[robert.middleton@milton-keynes.gov.uk](mailto:robert.middleton@milton-keynes.gov.uk)

### Drop-in Surgeries:

**Wolverton Town Hall** 10:00 - 10:30 on Saturdays.  
**Labour Hall, New Bradwell** last Friday of every month  
18:00. **No appointment needed.** Appointments can also  
be arranged at any time throughout the year. Please get  
in touch.

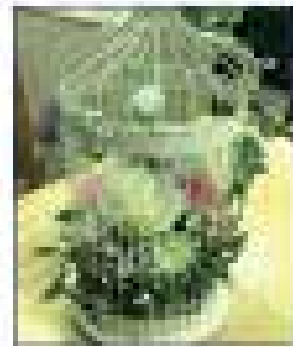


Please note: WGTC do NOT endorse any of the businesses advertised or any views expressed in the featured articles.



# Unique & Bespoke Floral Arrangements

Whatever your occasion, we can create a unique and bespoke floral arrangement to suit your requirements - no matter how different or quirky! We'd love to hear from you, so please get in touch!



[www.ruthsfloraldesign.co.uk](http://www.ruthsfloraldesign.co.uk)

01903 222870 • [info@ruthsfloraldesign.co.uk](mailto:info@ruthsfloraldesign.co.uk) • 0800 208 7474

JUST CREATIVE  
*Stationery and Gifts*

Specialist in Bespoke Stationery & Gifts

*Has your partner popped the Big Question?*

Get your date in everyone's diary now!

**HALF PRICE SAVE THE DATE CARDS**

Quick! *Love* when you book your consultation of place your order to take advantage of this amazing offer!

*Celebrate your occasion with a completely unique gift.*

Surprise your loved one with something **COMPLETELY UNIQUE** on their birthday or anniversary with one of our limited bespoke gifts.

Book your free, personal and expert consultation or browse our gifts online

[www.justcreativestationery.co.uk](http://www.justcreativestationery.co.uk) • 01903 418304 • [info@justcreative.co.uk](mailto:info@justcreative.co.uk)

13 Stratford Road, Wolverton  
**Your Local Creative Experts**  
 Floristry • Photography • Graphic Design

